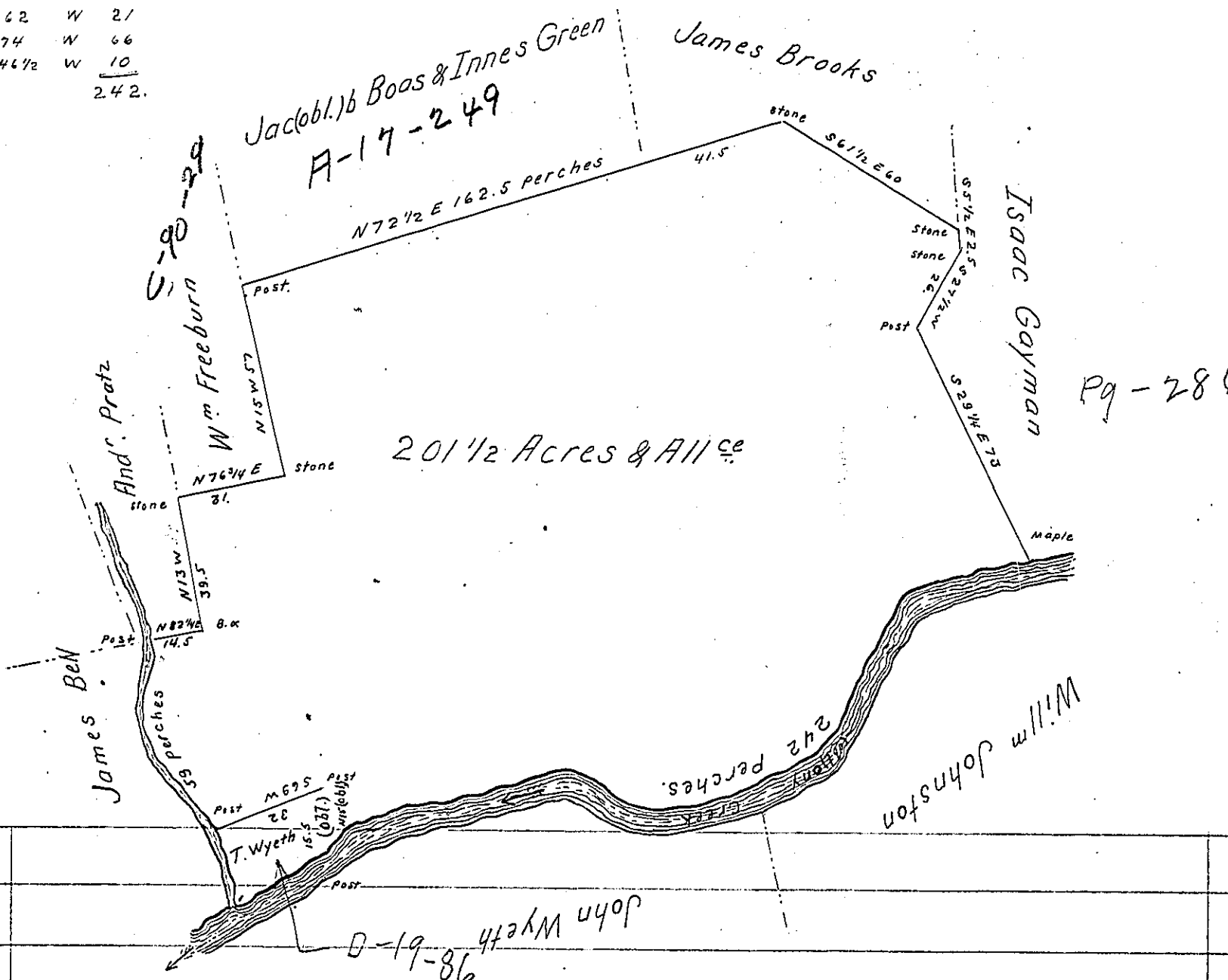


Courses & Dist^s down Creek. Beg at Maple

S. 7 1/2 W 25
 S. 60 W 18
 S. 20 W 40
 S. 58 1/2 W 26
 S. 73 W 26
 N. 84 W 10
 N. 62 W 21
 S. 74 W 66
 S. 46 1/2 W 10
 242.

Courses & Dist^s up run

N. 39 W 10
 N. 36 W 17
 N. 31 W 8
 N. 3 E 24
 59 perches.



Surveyed November 10th 1814 for James Wutt the above Described Tract of Land Situate in Middle Paxton Township Dauphin County containing Two hundred one Acre a half and allowance of Six per cent by Warrant of the 7th October A^o D^o 1814.

To Richard T. Leech Esquire }
 Surveyor General Pa. } Thomas Smith D.S.

IN TESTIMONY that the above is a copy of the original remaining on file in the Department of Internal Affairs of Pennsylvania, made conformably to an Act of Assembly approved the 16th day of February, 1833, I have hereunto set my Hand and caused the Seal of said Department to be affixed at Harrisburg, this seventh day of December 1904.

George P. Brown
 Secretary of Internal Affairs.